

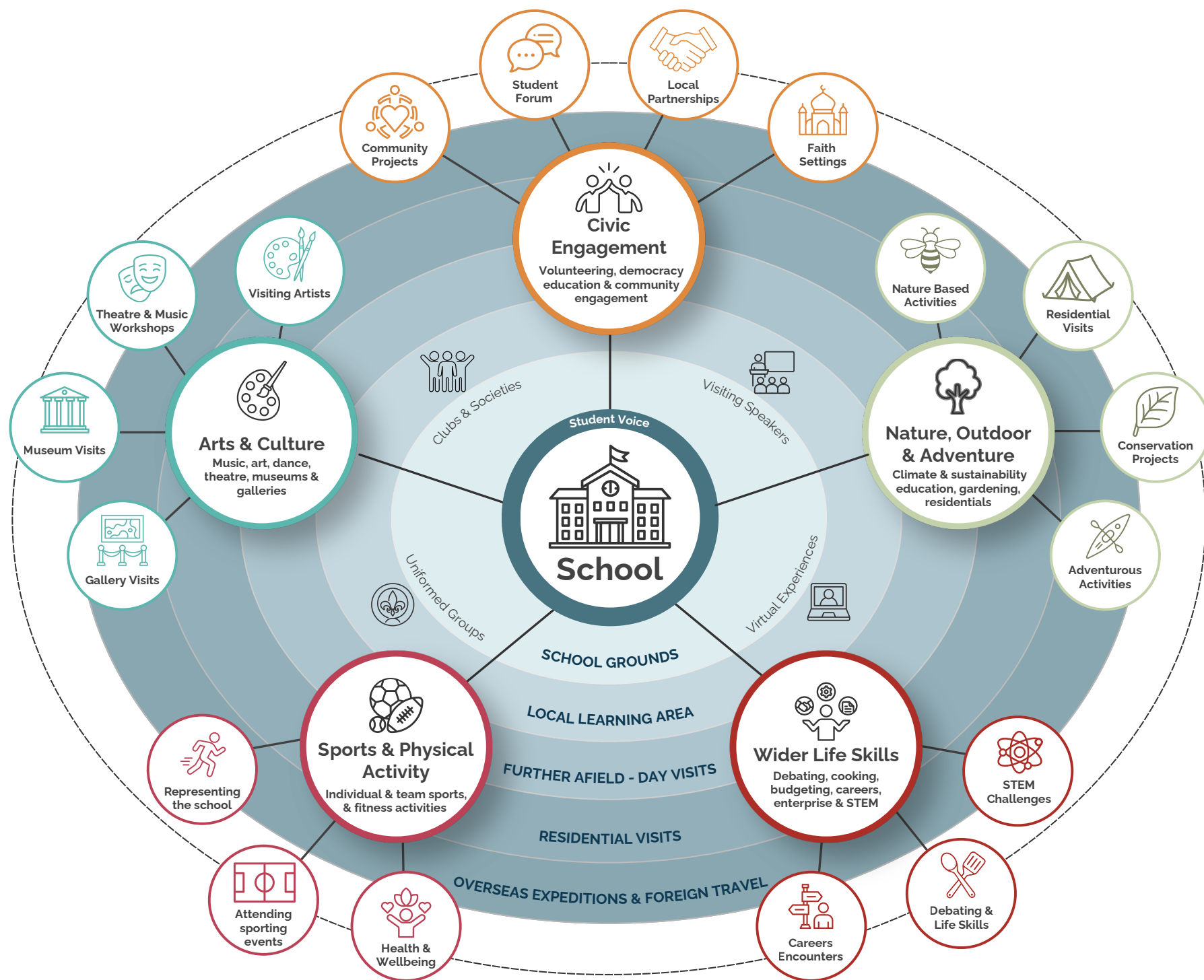
Learning outside the classroom delivers enrichment for all

“ Schools should feel reassured that they are already delivering a wide range of enrichment. By working through the LOtC Mark Progress Tracker, all 36 schools of our Trust have brought their existing activities together into a coherent, inclusive, whole school programme to extend and enrich learning, equipping them to create step by step plans to develop and evidence their progress.

Martin Campbell, Executive Principal, Meridian Trust

Did you know...

Almost all LOtC is currently assessed as enrichment.



WHEN During the School Day ↔ Beyond the School Day

WHERE On Site ↔ Off Site

WHO Teacher Led ↔ Community & Provider Led

Find out more...



The Council for Learning Outside the Classroom (CLOtC) can support you to:

Audit
Survey your whole staff team to capture the enrichment you already offer.

Map
Map activities to the 5 categories, places, times and people involved.

Action Plan
Prioritise and plan next steps to strengthen and broaden opportunities.

Evidence Progress
Track, consolidate, and evidence your progress using CLOtC's LOtC Mark Progress Tracker tool.